



P O Box 913 Kasane



kenosibrian@gmail.com



+267 71 665 242
+267 75 050 185



ABOUT EXPLICIT CONSTRUCTION

Explicit Construction has acquired top of the line testing equipment and the performs integrity of the pipe system by ensuring the system is “fit for purpose” and to obtain the relevant necessary certification on behalf of our clients. These procedures can be functional on system components such as pipes, tanks, valves and mechanical completion and commissioning services. We also assist contractors to meet compliance with the governing standards and regulations for certification. Explicit Construction has technicians with vast experience that contributes to reinforcing company's competence.

Our services are predominantly in the water distribution or recirculation networks



OUR SERVICES

Holiday testing is a non-destructive test method applied on protective coatings to detect unacceptable discontinuities such as pinholes and voids. The test involves checking and electric circuits to see if current flows to complete the circuit.



Civil and building works, we handle large projects in this sector including the following:
Roads, Bridges, Paving, Storm water drainages, Electrical works, Pipe wrapping, Sand blasting, internal lining etc.

NDT Services

- Dye Penetrant Test (PT)
- Magnetic Particle test (MT)
- Radiographic Test (RT)
- Ultrasonic Test (UT)
- Phased Array (PA)
- Time of Flight Diffraction Inspection (ToFD)



Sandblasting, sometimes known as abrasive blasting, is the operation of forcibly propelling a stream of abrasive material against a surface under high pressure to smooth a rough surface, roughen a smooth surface, shape a surface or remove surface contaminants. A pressurized fluid, typically compressed air, or a centrifugal wheel is used to propel the blasting material (often called the media).

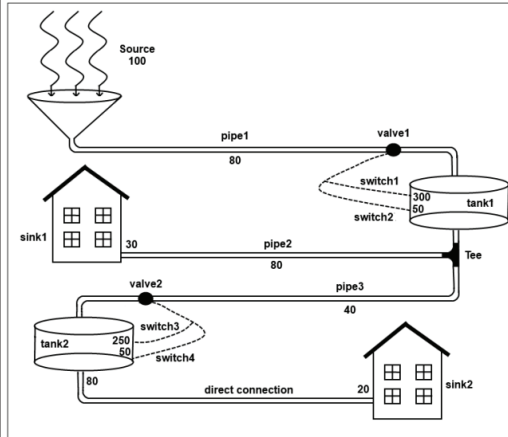


Figure 1

A water distribution system is a part of water supply network with components that carry potable water from a centralized treatment plant or wells to consumers to satisfy residential, commercial, industrial and fire fighting requirements

Radiographic testing industrial radiography is a modality of non-destructive testing that uses ionizing radiation to inspect materials and components with the objective of locating and qualifying that would lead to the failure of engineering structures.

